



## Quality and Stability Report for Ipamorelin

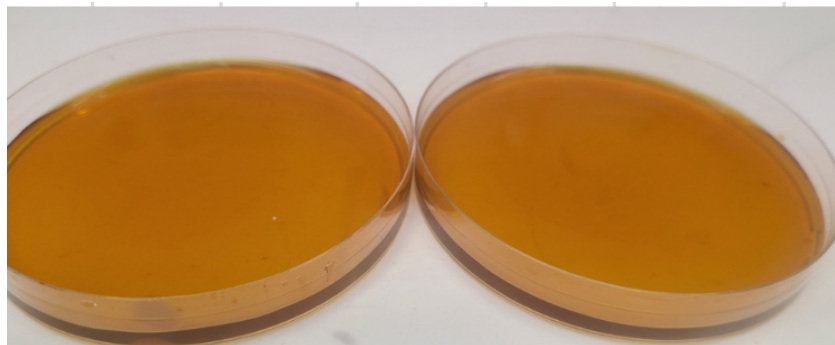
|                     |             |                         |                 |
|---------------------|-------------|-------------------------|-----------------|
| <b>Product Name</b> | Ipamorelin  | <b>Manufacture Date</b> | July 23rd, 2025 |
| <b>Batch No#</b>    | 5HIPA072325 | <b>Analysis Date</b>    | July 30th, 2025 |
| <b>Quantity</b>     | 1 vial      | <b>Expire Date</b>      | One Year        |

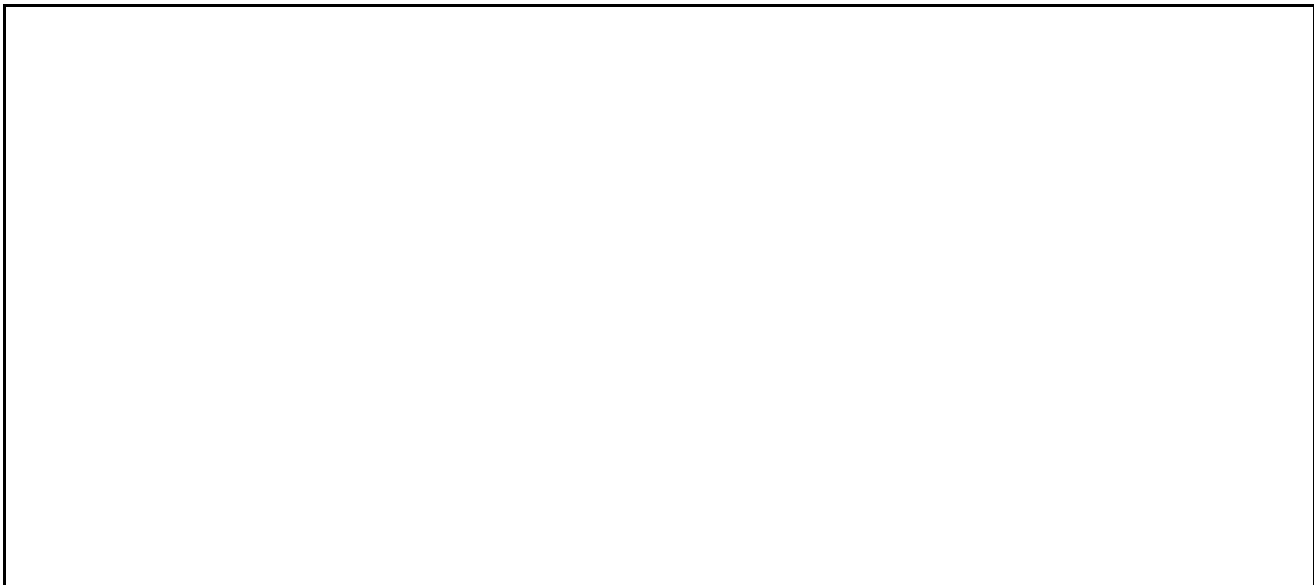
| Tested Item   | Specification                    | Results  |
|---------------|----------------------------------|----------|
| Appearance    | White Powder                     | Complies |
| Odor          | Odorless                         | Complies |
| Fluid Clarity | Clear solution without particles | Complies |
| pH value      | pH=7.0 after dissolved           | Complies |
| Heavy Metals  | Test                             | Complies |
| Arsenic       | Test                             | Complies |
| Lead          | Test                             | Complies |
| Mercury       | Test                             | Complies |

| Microbie Test     |                                      |          |
|-------------------|--------------------------------------|----------|
| Total Plate Count | 2 plate for 1ml of sample each plate | Complies |
| Yeast & Mold      | Negative (Potate LB Plates)          | Complies |
| Bacteria          | Negative (Potate LB Plates)          | Complies |
| Endotoxin Level   | <0.05 EU/ml                          | Complies |

|                   |  |
|-------------------|--|
| <b>Conclusion</b> | The QC data shows no bacterial/fungal contamination in the sample.<br>The product is qualified for each specification for release. |
|-------------------|--|

**Note:** LB agar and enriched LB culture media were used to test microbie in the samples. 48 hours culture time was used for mold and bacterial growth. Endotoxin was below 0.05 EU/ml, kit from Genscripts Inc.





|                     |                      |                    |                   |
|---------------------|----------------------|--------------------|-------------------|
| <b>QC Scientist</b> | <b>Edwin Hu, PhD</b> | <b>Report Date</b> | <b>30-July-25</b> |
| <b>Signature</b>    | <i>Edwin Hu</i>      | <b>Date</b>        | <i>30-July-25</i> |